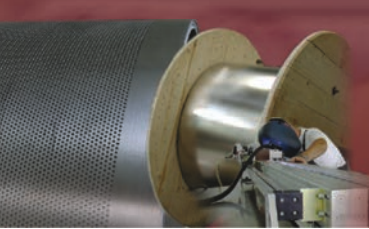


Food & Chemical Applications

CONTIBELT SOLID STEEL PROCESS BELTS

www.contibelt.com

Contibelt Band Systeme GmbH
Heid-Werkstrasse 3, Bldg. 140
A-2000 Stockerau / AUSTRIA
tel.: +43 2266 66300
fax.: +43 2266 66300 15
e-mail: band@contibelt.com



Producing with Contibelt



One product - many possibilities

Freezing, steaming, drying, forming or transporting: Contibelt solid steel process belts are important components in modern continuous production processes. While our belts are an excellent choice for hygienically transporting products, they can do more than this: transfer temperature and/or pressure.

Contibelt solid steel belts are developed to be used in various applications and they can be manufactured to meet different specifications in order to suit your individual requirements.

Your business and Contibelt

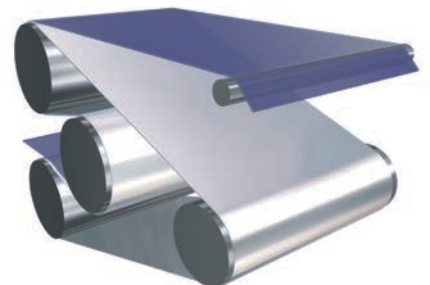
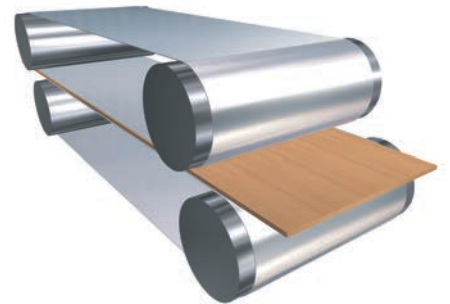
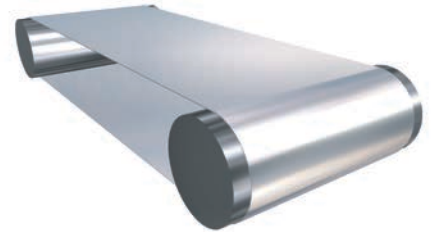
Contibelt will assist you in manufacturing your product in the most economical way. Together with our experienced application engineers we will choose the steel belt that reliably suits your application requirements with respect to tensile strength, hardness, ductility, abrasion- and corrosion resistance and elongation.

Irrespective of whether your produce chocolates, processed food, chemicals, pharmaceuticals or wooden particle boards: Contibelt will support your success.

Innovation is important to us

We put emphasis on research, and on continuously improving our products. Contibelt has partnered up with renowned research institutes. Together, we optimize the mechanical properties of the steel grades used in our products, and we successfully developed our unique CONVEROPE tracking v-rope. Consequently, Contibelt's v-rope attachment is significantly more durable and resists more adverse production environments than conventional, hot bonded v-ropes of other suppliers. This gives you the reliability you need for producing efficiently.

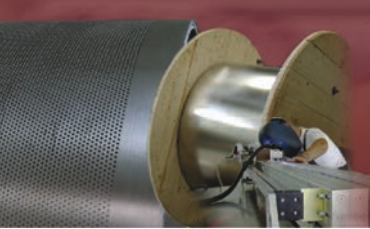
Our more than 20 years of experience and continuous research are the basis of our success.



CONTIBELT SOLID STEEL PROCESS BELTS

www.contibelt.com

Contibelt Band Systeme GmbH
Heid-Werkstrasse 3, Bldg. 140
A-2000 Stockerau / AUSTRIA
tel.: +43 2266 66300
fax.: +43 2266 66300 15
e-mail: band@contibelt.com



Endless belt - countless uses: Contibelt process belts are custom-made to meet individual requirements. Whether they are being used to freeze fish fillets or to steam processed food: our belts reliably transfer heat into or out of food products. Likewise, they are used for processing caramel, candy and chocolates as well as for freeze-drying instant coffee. But not only do our belts transfer temperature: Contibelt solid steel belts are hygienic, durable and easy and efficient to clean and therefore are an ideal means for transporting products in food applications.



Our delivery program:

Dimensions: width: 600 / 800 / 1000 / 1200 / 1500 / 1550 / 1560 / 2000 mm
thickness: 0.6 / 0.8 / 1.0 / 1.2 mm

(other dimensions available upon request)

Surface: mill finish according to ASTM standard 2B
(other surface finishes available upon request)

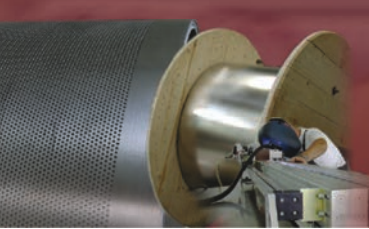
Tolerances: width tolerance +/- 1 mm)
thickness tolerance +/- 10 %

Belt materials: the choice of the most suitable steel belt material is depending on individual customer requirements and shall best be decided upon together with our experienced engineers who can choose from a wide variety of steel and stainless steel qualities which have been especially developed for steel belt applications. These materials include, amongst others - the following qualities:

CB 301 SGA	(cold rolled austenitic stainless steel)
CB 316 SGA	(austenitic stainless steel, improved corrosion resistance)
CB 31 SGM	(cold rolled martensitic stainless steel)
CB 630 SGM	(precipitation hardened, martensitic stainless steel)

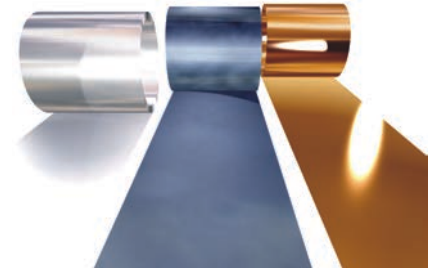
Belt tracking: plain belt, without v-rope
centered v-rope
side v-rope(s)
retaining rope(s)

Belt ends: prepared for field welding
shop welded endless in our facilities



Contibelt offers belts in a variety of steel qualities, dimensions and surface finishes for an impressive number of applications. The below list gives an overview over our most popular steel qualities. However, the final choice of the steel grade most suitable for your specific application should be made together with our experienced engineers.

Contibelt closely cooperates with renowned research institutes in order to continuously adjust our steel qualities to changing customer requirements.



Our steel qualities in brief:

CB 105 SGF

Patented, cold rolled, microstructured special steel with ferritic structure. This steel quality is especially suitable for chocolate and cocoa mass transportation.

CB 301 SGA

Cold rolled, stainless steel with austenitic structure. In general, the material is in accordance with the ASTM Standard AISI 301. Its high tensile strength characteristics, good corrosion resistance and good weldability make our CB 301 SGA a perfect choice for a wide variety of applications.

CB 316 SGA

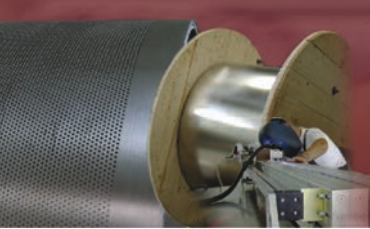
Cold rolled, stainless steel with austenitic structure and increased corrosion resistance over CB 301 SGA. In general, the material is in accordance with the ASTM - Standard AISI 316.

CB 31 SGM

Cold rolled stainless steel with martensitic structure. This steel quality with very good spring properties, high ductility, high tensile strength and low temperature expansion was especially designed for steel belt applications.

CB 630 SGM

Cold rolled, precipitation-hardened stainless steel with martensitic structure, chemical composition similar to AISI 630. This steel was especially designed for highly demanding steel belt applications and is characterized by high tensile and yield strength, high ductility, high fatigue strength, good corrosion resistance and good weldability.



Contibelt's unique v-ropes



Frequently, steel belts are tracked on conveyors using nitrile rubber v-ropes. These are bonded to the underside of the belts. Conventional v-ropes by other steel belt suppliers, which are attached to the belt using hot bonding techniques, can come loose. This causes major inconveniences on a running steel belt. Contibelt took a different approach to v-rope attachment and developed a unique, highly reliable v-rope: the Contibelt **CONVEROPE**.

How does our v-rope work:

Contibelt realized the drawbacks of conventional hot bonding processes used to attach v-ropes onto steel belts, and partnered up with experts from renowned research institutions to develop a better solution. The excellent attachment of our unique v-rope is based on a chemical bond between the molecules of our rubber v-rope and those of our steel belts.

Not just are our v-ropes significantly more resistant against mechanical stresses than conventionally bonded ones, they also resist higher operating temperatures. Whereas conventional v-ropes may come loose at temperatures of only +176° F (80° Celsius), Contibelt guarantees that its standard v-rope **CONVEROPE MHT** will reliably resist long term temperature exposure to temperatures of up to +275° F (135° Celsius). This makes our v-rope perfectly suitable for steaming applications.

And Contibelt also has a solution for your low temperature applications: Our **CONVEROPE ULT** v-rope is suitable for permanent exposure to temperatures of -58° F (-50° Celsius) and therefore can be used in freeze-drying applications.



Conventionally bonded v-ropes by other steel belt manufacturers might come loose at temperatures of +176° F (+80° C).



Our Contibelt **CONVEROPE** will reliably resist mechanical stress and temperatures of up to +275° F (+135° C).

CONTIBELT SOLID STEEL PROCESS BELTS

www.contibelt.com

Contibelt Band Systeme GmbH
Heid-Werkstrasse 3, Bldg. 140
A-2000 Stockerau / AUSTRIA
tel.: +43 2266 66300
fax.: +43 2266 66300 15
e-mail: band@contibelt.com