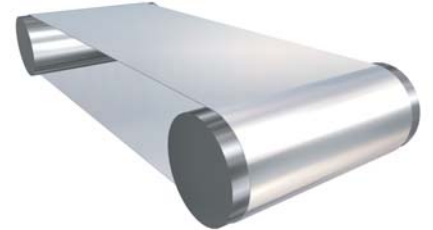


Steel Belts for Tire Testing



In order to make your travel safer, tire manufacturers use Contibelt steel belts to test the performance of their products in controlled laboratory environments. Repetitive skid, slip and speed tests are performed in special high speed conveyors. As the steel belt acts as artificial road surface, it is exposed to significant stress while moving at speeds of up to 300 km/h.

These requirements make our high tensile strength, PH-grade stainless steel belts a perfect choice. Contibelt belts for tire testing applications come endless welded and with a ground surface finish to assure best possible thickness uniformity within each belt.



Our delivery program:

- Dimensions: width: up to 1.550 mm (single width)
- thickness: 0,8 / 1,00 / 1,20 / 1,80 / 2,00 mm
(other dimensions available upon request)
- Surface: ground on one or both sides
- (the appropriate surface roughness should be chosen together with our experienced engineers)
- Tolerances: width tolerance +/- 1 mm (for single width belts)
- thickness tolerance +/- 10 % (max. difference from nominal thickness)
- Belt materials: For this special, highly demanding application, we recommend using only high tensile strength, PH-grade stainless steels such as our quality CB 630 SGM, which was developed and optimized by our experienced technicians in cooperation with experts from recognized research institutes.
- Belt ends: shop welded endless in our facilities

CONVEBELT - THE BELT FROM CONTIBELT

www.contibelt.com

Contibelt Band Systeme GmbH
Derschstrasse 38
A-2126 Ladendorf / Austria
tel.: +43 2575 2304
fax.: +43 2575 2304 15
e-mail: band@contibelt.com